

# Installation Instructions, LPA770, universal laser scanner holder, LANpoint 7



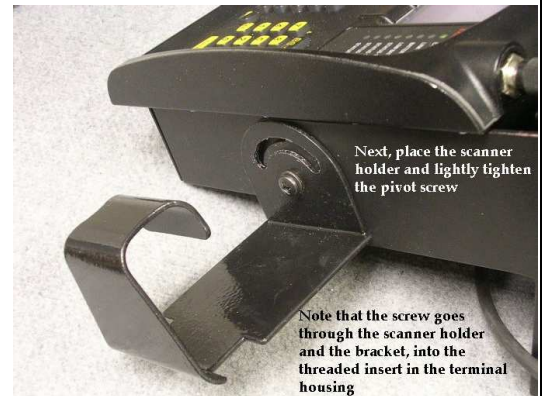
◀ LPA770 is an easy-to-reach holder for virtually any laser scanner used with the LANpoint 7 Data Collection Terminal.

▶ LPA770 contains these components – bracket and instruction sheet; note that the attachment hardware is included with the 'U' mounting bracket which is a required prerequisite



◀ Step 1: Remove the handwheel and pivot screw on the side of the terminal where the scanner holder will be attached.

▶ Step 2: Over the bracket, place the scanner holder and lightly tighten the pivot screw/washer



◀ Step 3: insert the handwheel/ washer in the swivel slot and leave thumbwheel loose until final installation

▶ Finished: swivel terminal to the most comfortable viewing angle and tilt the holder until it is level; then tighten handwheel & pivot screw

